



## Fairline Targa 31

<b>Make:</b> Fairline	<b>Boat Name:</b> Bora Bora
<b>Model:</b> Targa 31	<b>Hull Material:</b> Fibreglass (GRP)
<b>Length:</b> 32 ft 6 in	<b>Draft:</b> 3 ft 2 in
<b>Beam:</b> 11 ft 8 in	<b>Number of Engines:</b> 2
<b>Year:</b> 1993	<b>Fuel Type:</b> Diesel
	<b>Price:</b> GBP 52,950



## Description

---

### Fairline Targa 31 - 1993 - £52,950

A very well presented and carefully maintained Targa 31. This boat is fitted with twin low hours 200hp Volvo Penta diesels.

A 360 degree panorama tour is available for this boat, contact us for the link.

Viewing is highly recommended.

Please contact us on 01752 228855 or email us for further details or to arrange a viewing.

## Measurements

---

Cruising Speed:	22 kn	Displacement:	11000
Max Speed:	34 kn		lb
LOA:	32 ft 5 in	Fuel Tanks Cap.:	545 L
Beam:	11 ft 8 in	Fresh Water Tanks Cap.:	120 L
Max Draft:	3 ft 2 in		

## Accommodation

---

Four berths in two cabins comprising of aft master cabin with two singles converting to large double and large forward saloon converting to large double berth.

Large galley with S/S sink, double gas hob, Smeg oven/ grill, large integrated fridge and extractor fan. Corian worktops with matching infills, crockery storage complete with Fairline branded crockery set.

Separate head compartment with sea toilet, shower and basin.

Aft Cockpit with a starboard helm position with "L" shaped settee opposite to port, sink unit with 12v/240v Waeco Cockpit Fridge storage, and large "U" shaped settee aft with table which can convert to create a large sun bed. Transom door to bathing platform.

Calorifier providing hot water from port engine or 240v shore power.

Eberspacher D2 warm air heating system with closable vents to master cabin saloon and cockpit, together with remote 7 day controller (fitted new 2015)

Bespoke cockpit table and matching woodwork throughout cockpit (replaced 2016)

Cockpit upholstery and helm seat replaced (March 2017)

Snap in cockpit mats.

## Mechanical and electrical systems

---

2 x Volvo AD41A-P 200hp 6 Cylinder diesel engines fitted new in 2000 with approximately 418 hrs run from new (As at 09.07.2017). Engines last serviced June 2016

Bespoke fuel polishing and filtration system to fuel tank (new 2014)

2 x Volvo Penta 290DuoProp out-drives. Drives last serviced March 2017

---

Barbican Yacht Agency  
Sutton Harbour Marina, Plymouth Devon  
Tel: +44 (0)1752 228855 info@plymouthyachts.co.uk  
<http://plymouthyachts.com>

New propeller sets fitted in 2015  
Trim Tabs

#### Electrical:

240v Shore power connection with shore cable

30 amp Sterling Pro Charge Ultra charger/ conditioner with remote control panel in galley (new 2015)

Upated domestic battery bank consisting of 2 X 140ah Rolls traction batteries. Plus one dedicated 125ah starting battery for each engine with link switch at helm (new 2015)

Volvo Penta anode/ cathode electronic underwater protection - one for each drive (new 2013)

70amp Galvanic Isolator with remote led indicator in helm (new 2014)

Port engine alternator uprated and split charging system for domestic battery bank.

Glomex 12v Digital TV aerial with booster (new 2014)

Energy saving LED lights in cabin/ saloon.

Sony bluetooth music system with hand held remote and fixed position helm controller. 4 speaker system with 2 in galley and two high power Sony marine speakers in cockpit (new 2015)

### **Navigation Equipment**

---

Raymarine RL70 CRC 7 ½ inch multi- function colour display with radar chart overlay and Marpa.

Raymarine VHF/DSC radio with external speaker

Nasa Clipper speed log/ depth

Bespoke 316 Stainless steel radar gantry/arch housing Raymarine radar scanner and searchlight, Raymarine GPS receiver, fog horn and LED streaming light.

### **Deck Equipment**

---

Upgraded S/S stem head with 10 kg Delta anchor

30mtrs chain + 30 mtrs rope (new 2015)

Lewmar electric anchor windlass with helm and bow controls.

Warps & fenders

Weaver Snap Davits to bathing platform for inflatable tender stowage

S/S outboard engine bracket to transom

S/S bathing Ladder

Hot & cold Mira transom shower

Waeco 12v/ 240v cockpit fridge

Cockpit sink and drainer

120ltr fresh water tank and deck filler.

## Safety Equipment

---

Manual and auto electric bilge pumps

Auto fire extinguishers in engine bay and fuel tank compartment with remote helm indicators.

Jabsco remote control search light with helm control (new 2014)

Fire blanket in galley

## Comments

---

This Fairline Targa 31 has only had one previous owner from new and has been meticulously maintained and updated with no expense spared.

It is one of the very best equipped and top condition Targa's you will find in the market.

The Targa 31's are known for their legendary seakeeping and this one is no exception.

Afloat in Plymouth and ready to go – she wants for nothing.

## History & Construction

---

GRP hull, deck and superstructure, with integral bathing platform constructed in 1993.

This is one of the older, hand-laid, slightly broader Fairline hulls (for stability and good volume), fitted out with genuine wood veneers and hardwood cappings; in short - the vintage that the connoisseur will be looking for!

Anti-fouling removed and preventative Hempel Gel protect epoxy applied (2013), with the waterline smartly finished parallel to the water, rather than taken up the bow sections.

## Disclaimer

---

The Company offers the details of this vessel in good faith but cannot guarantee or warrant the accuracy of this information nor warrant the condition of the vessel. A buyer should instruct his agents, or his surveyors, to investigate such details as the buyer desires validated. This vessel is offered subject to prior sale, price change, or withdrawal without notice.

## Photos

---



Bora Bora



Bora Bora



Stern



Forward Cockpit



Helm



Helm Seat





Mid Cockpit Seating



Aft Cockpit Seating



Cockpit Bar & Fridge



Forward Saloon



Galley Area



Saloon Looking Aft



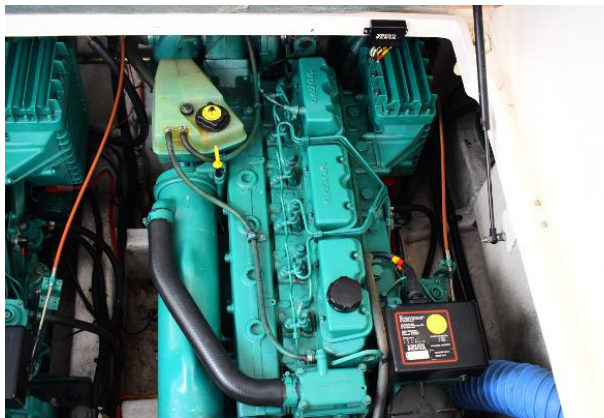
Aft cabin



Heads



Stb Engine



Port Engine



418 Engine Hours (09.07.2017)



Pontoon view



Alongside